

C H I L D R E N ' S P L A Y G R O U N D

INDOOR OUTDOOR ADVENTURE PLAYGROUND EQUIPMENT

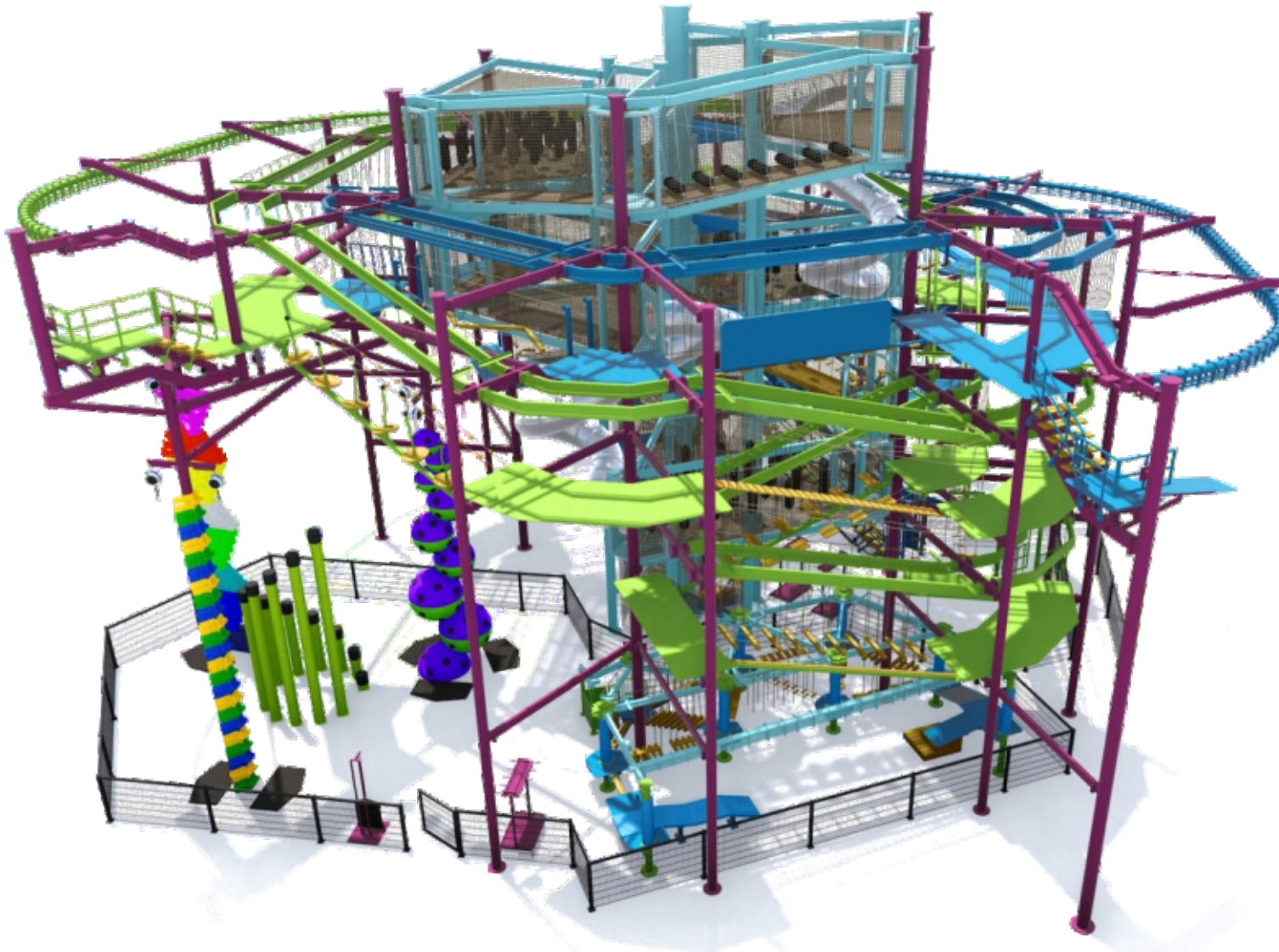


Guangzhou Baoli Animation Technology Co., Ltd.

High Aerial Obstacle Course

BLEE

INDOOR EXTENSION SERIES



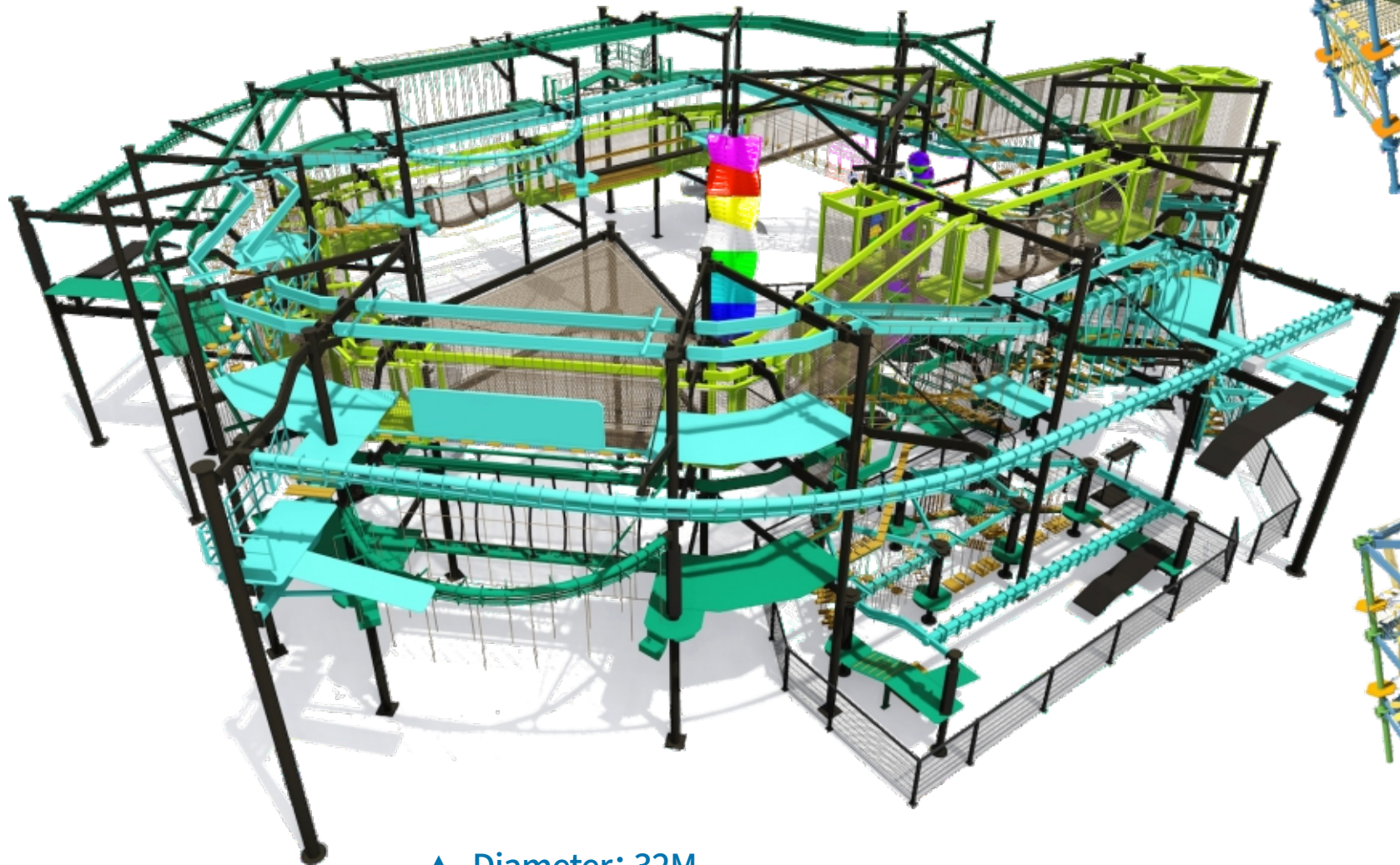
The high-altitude matrix design concept aims to create an aerial adventure space full of challenges and excitement. Based on the high-altitude platform, various obstacles and levels are carefully arranged, such as ropes and single-plank bridges. It tests the balance, coordination and courage of participants, allowing them to challenge themselves in the sky and experience a unique adventure.

◀ Diameter: 24M
Height: 18M

High Aerial Obstacle Course

BLEE

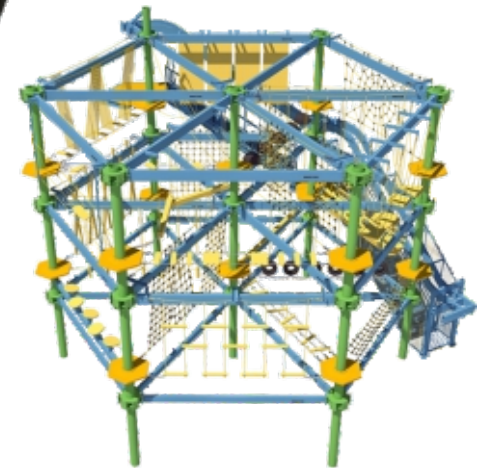
INDOOR EXTENSION SERIES



▲ Diameter: 32M
Height: 12M



▲ Width: 4M
Length: 12M
Height: 6M



▲ Diameter: 12M
Height: 6M

High Aerial Obstacle Course

BLEE

INDOOR EXTENSION SERIES



Ropes Course

INDOOR EXTENSION SERIES

BLEE

The design concept of aerial adventure focuses on creating the ultimate adventure experience. By utilizing the high-altitude environment, thrilling and challenging projects are constructed, such as suspended bridges and zip lines. Emphasis is placed on the cultivation of courage and confidence, allowing participants to overcome fear in the aerial state, challenge their own limits, and experience the unique charm of adventure and physical and mental transcendence.



Ropes Course

INDOOR EXTENSION SERIES

BLEE

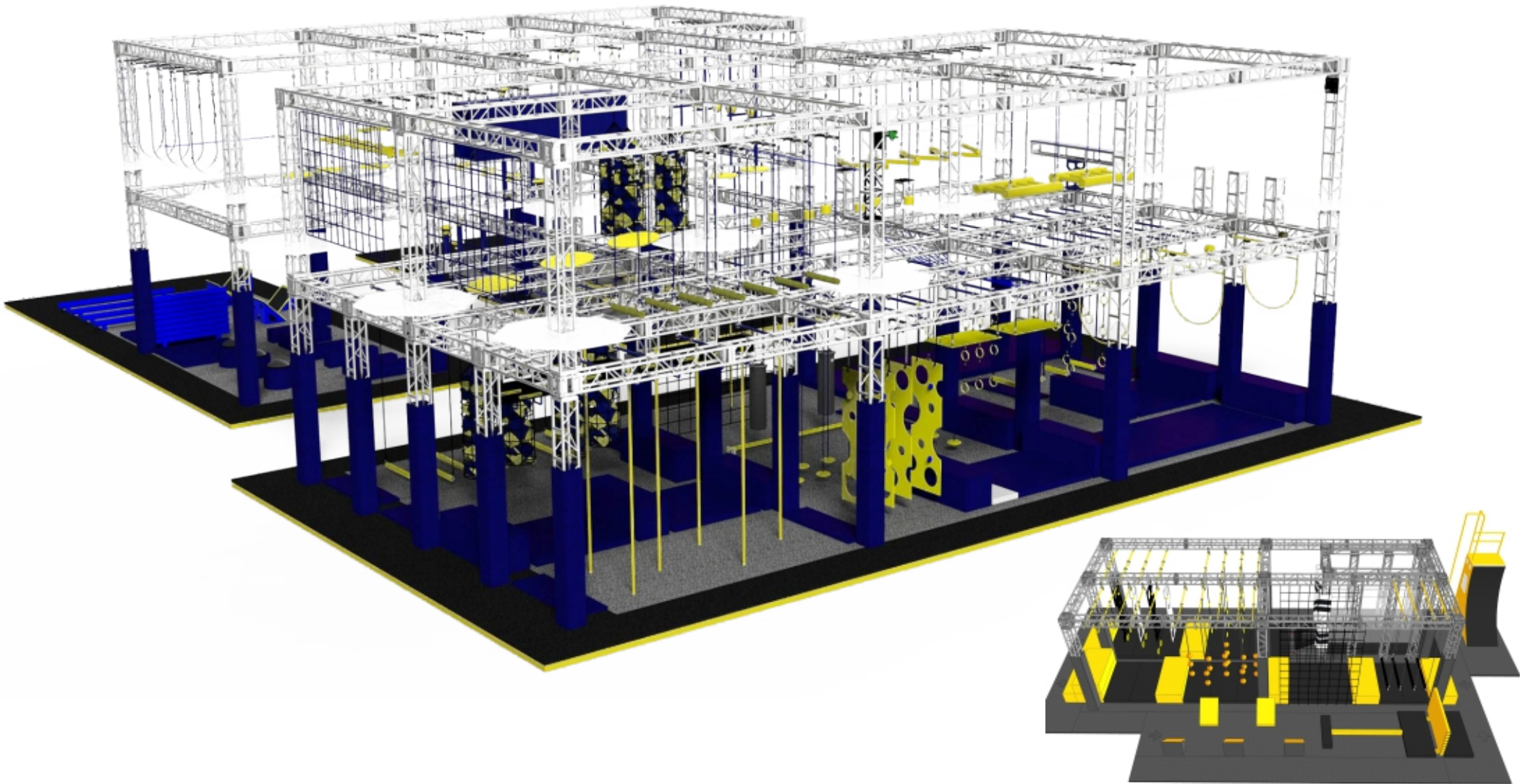


Ninja Warrior

INDOOR EXTENSION SERIES

BLEE

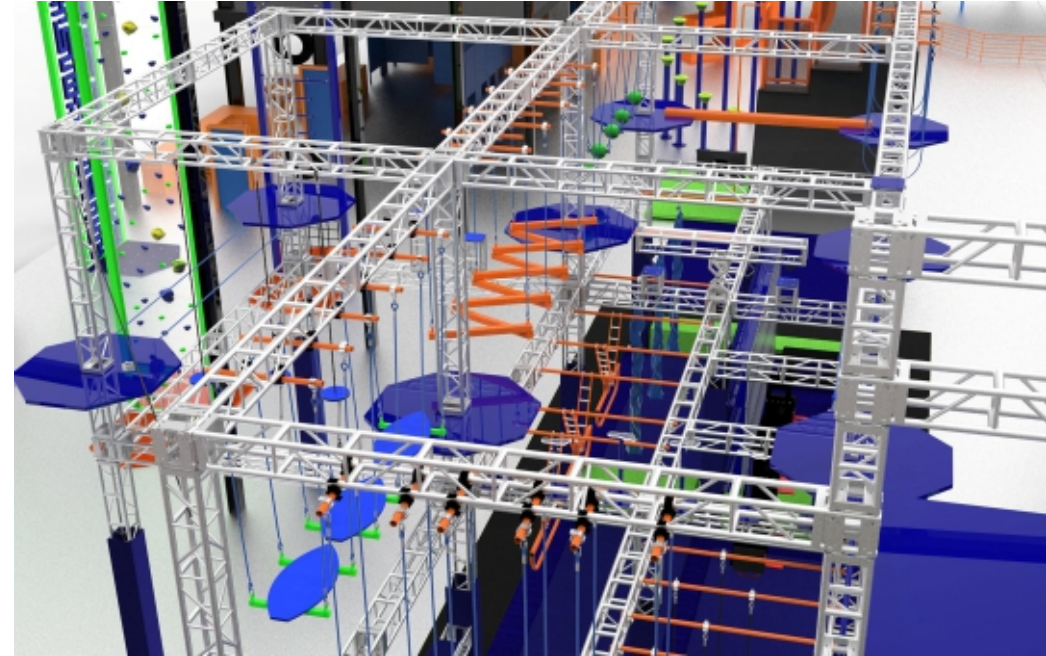
The design concept of Ninja Challenge is inspired by ninja culture. Various obstacle levels are set up, such as climbing, crossing, and balancing challenges, to simulate ninja training scenes. The comprehensive use of speed, agility, and strength is emphasized to stimulate the participants' competitive consciousness and spirit of challenge, allowing them to experience the bravery and tenacity of a ninja in the challenge.



Ninja Warrior

INDOOR EXTENSION SERIES

BLEE



Creative rock climbing

INDOOR EXTENSION SERIES

BLEE

The design concept of creative rock climbing is to break through tradition. Incorporate novel shapes and theme elements, such as simulating natural wonders or science fiction scenes. Set up diverse climbing routes and difficulty levels to meet the needs of different groups of people. Emphasize interaction and experience, allowing participants to feel the charm of creativity in climbing, challenge themselves and enjoy unique fun.



Creative rock climbing

INDOOR EXTENSION SERIES

BLEE

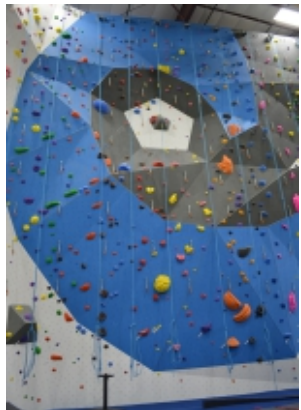


Bouldering

INDOOR EXTENSION SERIES

BLEE

The design concept of bouldering focuses on the balance between safety and challenge. It creates compact and varied rock routes to ensure safety at a relatively low height. It uses a variety of shapes and fulcrum settings to inspire climbers to use skills and strength. It emphasizes instant experience and fun, allowing people to fully enjoy the excitement and charm of bouldering in a short time.



Bouldering

INDOOR EXTENSION SERIES

BLEE

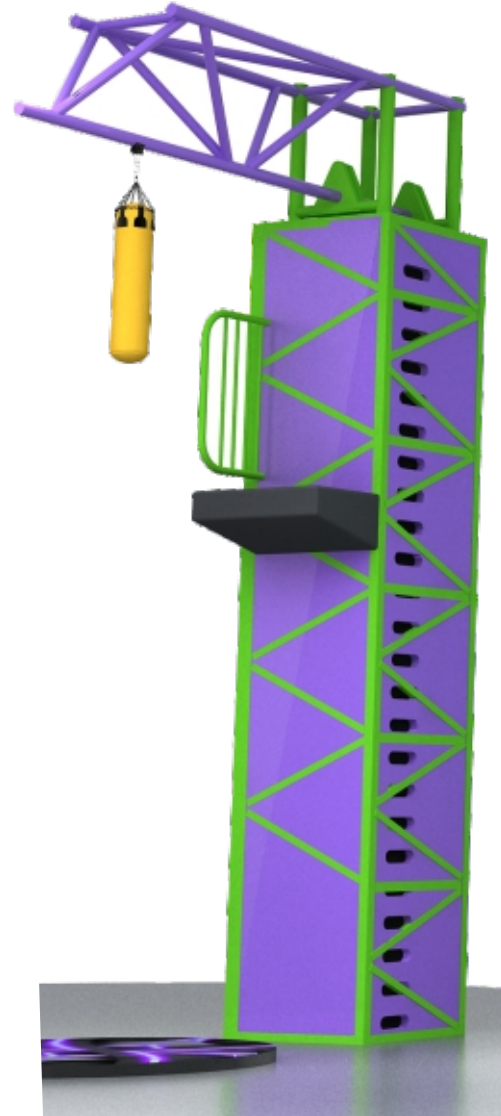
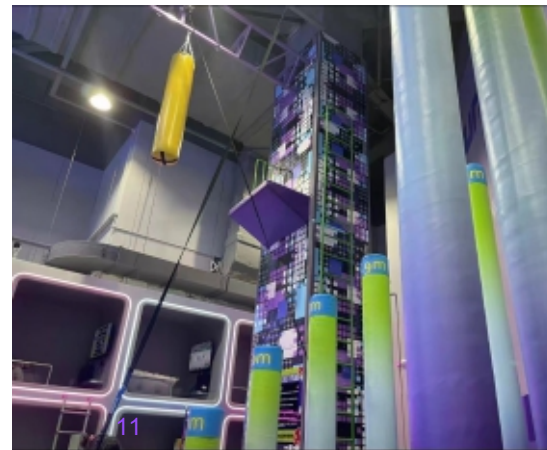
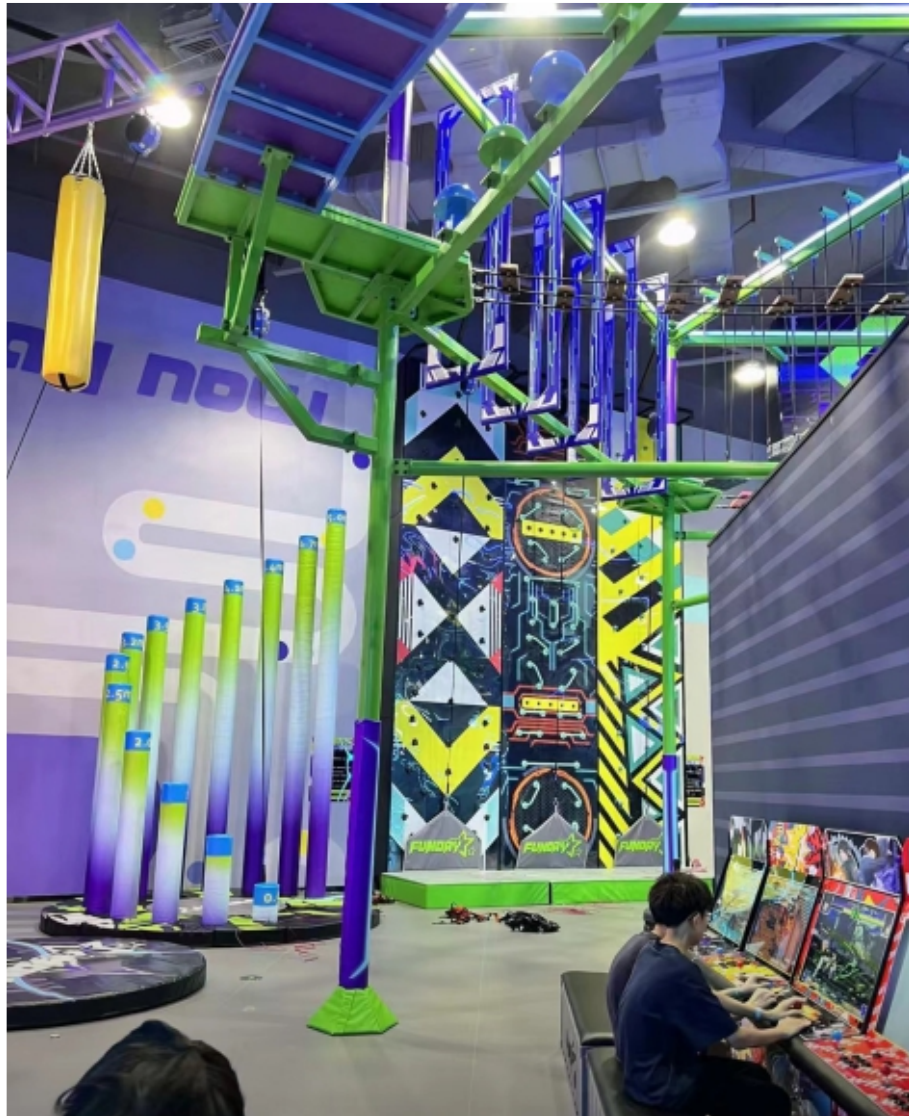


Leap of Faith

INDOOR EXTENSION SERIES

BLEE

The action design of the leap of faith is very cool, which allows players to feel the strength and confidence of the character. At the same time, the leap of faith can also allow players to experience the thrill of free fall in the game, increasing the fun of the game. Jumping from a high place is considered a manifestation of bravery and faith, which may be consistent with the beliefs and values of the assassin in the game.



Leap of Faith

INDOOR EXTENSION SERIES

BLEE



Kids Maze

INDOOR EXTENSION SERIES

BLEE

3D maze, enhance immersion. Incorporate specific themes into the design of 3D maze, such as myths, science fiction scenes, etc. Shape the environment, obstacles and reward elements of the maze according to the theme. To increase the sense of freshness, you can randomly add some dynamic elements, such as moving platforms, changing channels, etc.

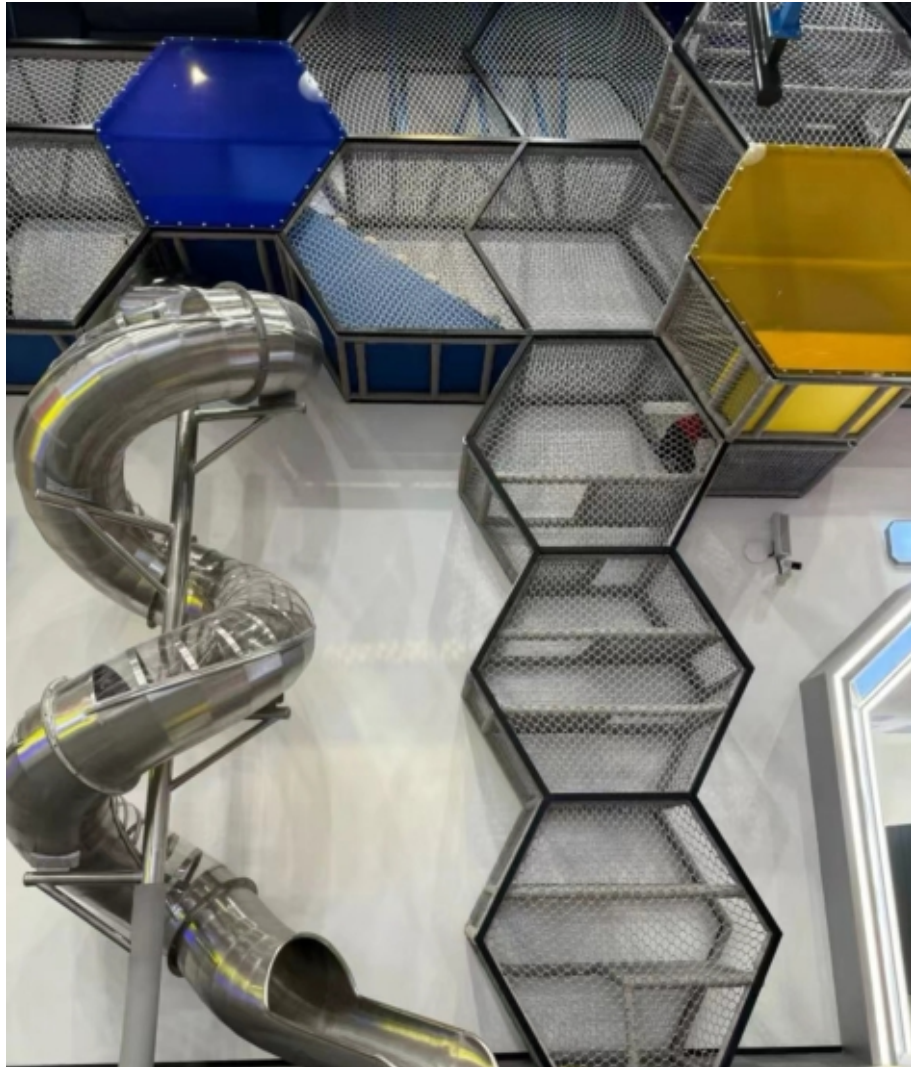


Kids Maze

INDOOR EXTENSION SERIES

BLEE

Traditional mazes are mostly in planar form, but three-dimensional mazes break this limitation and build paths in three-dimensional space. By adding vertical layers, it brings new challenges and experiences to participants. For example, by designing a multi-layer structure, players need to constantly climb up and down and shuttle between different floors during the exploration process, which increases the complexity and fun of the maze. Use height differences to set levels of different difficulty.



Elastic maze

INDOOR EXTENSION SERIES

BLEE

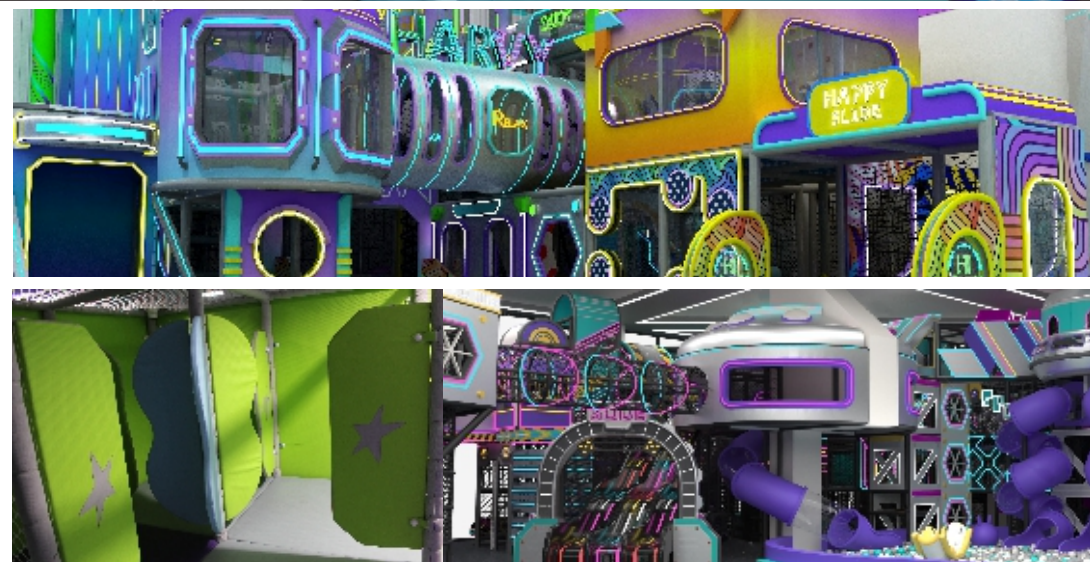
The design concept of the elastic maze is to innovate and integrate elastic elements. By cleverly setting elastic devices, such as spring floors and elastic ropes, players can feel the unique rebound force while walking. The path design is varied, which increases the fun of exploration and inspires players to break through obstacles with elastic skills and wisdom, and enjoy a different maze experience.



Elastic maze

INDOOR EXTENSION SERIES

BLEE



Wall Obstacles

INDOOR EXTENSION SERIES

BLEE

Comprehensively exercise the participants' upper limbs, lower limbs and core strength. Set up various handles and rock points on the wall that require arm strength to climb, as well as pedaling devices that require explosive leg power. For example, irregularly distributed rock points require participants to use different gripping methods and body balance skills to fully mobilize the upper limb muscle groups, from small muscle groups in the hands to large muscle groups in the shoulders and back. Set up some pedals that protrude from the wall to a certain height, and participants need to cross them through strong leg pedaling, which is a great test of leg muscle strength.



Wall Obstacles

INDOOR EXTENSION SERIES

BLEE



Crochet Playground

INDOOR EXTENSION SERIES

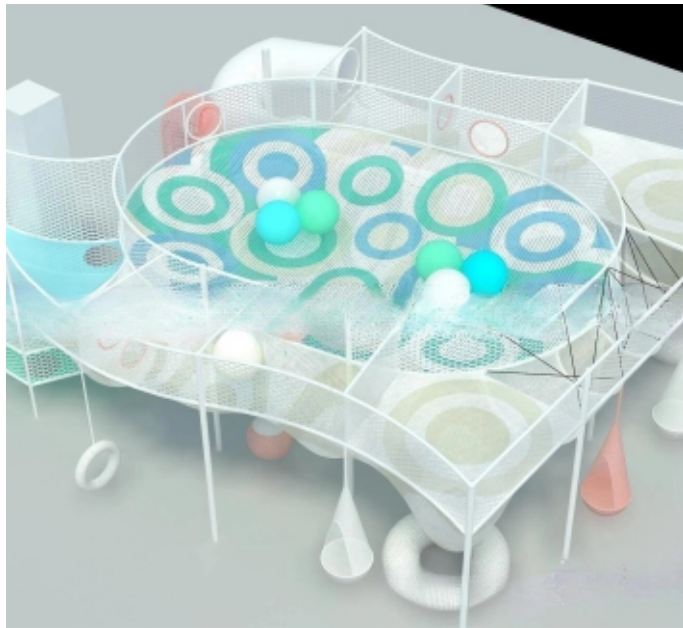
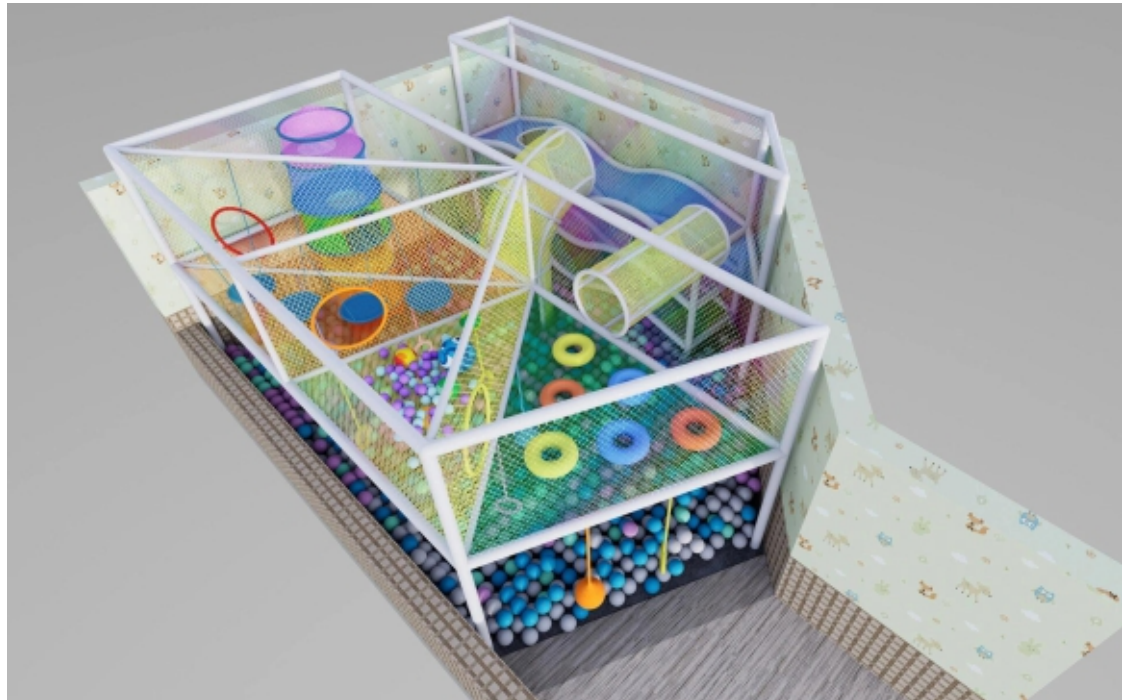
BLEE

The design concept of the aerial magic net array is to build a dreamy and challenging aerial amusement space. Soft and elastic magic nets are used to create various passages and activity areas. Participants can experience the unique elastic touch in mid-air, stimulate their desire to explore, and enjoy the fun and excitement of flying in the air. Participants need to cross by pedaling their legs strongly, which is a great test of leg muscle strength.



Crochet Playground

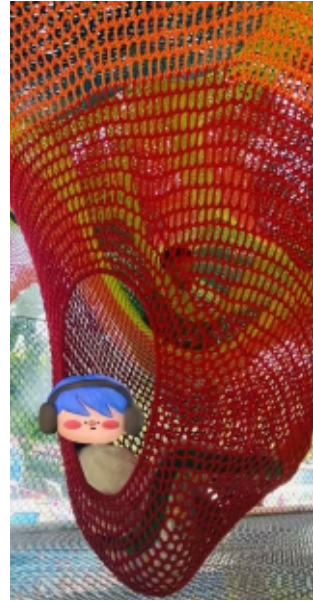
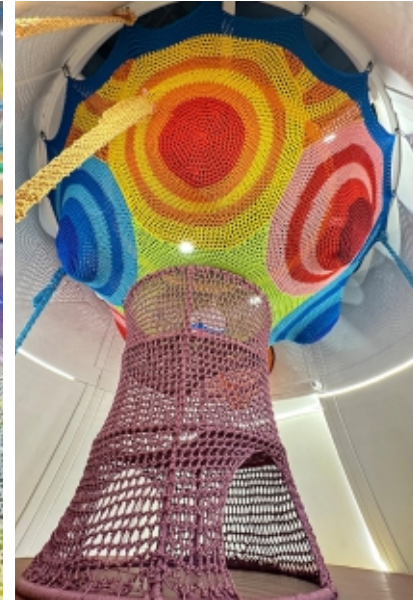
OUTDOOR EXTENSION SERIES **BLEE**



Crochet Playground

INDOOR EXTENSION SERIES

BLEE



ZIP LINE

INDOOR EXTENSION SERIES

BLEE

The design concept of the aerial slide focuses on providing a unique aerial sliding experience. With the help of the high altitude drop, a smooth track is created. Participants can hang and slide, feel the speed of lightning and the excitement of free fall, while enjoying the beautiful scenery at high altitude, and achieve a unique entertainment and adventure experience in thrill and enjoyment.



ZIP LINE

INDOOR EXTENSION SERIES

BLEE



ADVENTURE TOWER

Interactive Aerial Adventure Park



Adventure Tower Shape: The Adventure Tower project adopts the crystal structure design concept. It sets and builds various obstacles of different difficulty, style and super excitement between steel or wooden columns. This design not only increases the stability of the equipment and ensures the practicality of the customer's use of the site, but also sets up a viewing platform according to the structure, which can reach 80-200 square meters and can be used for leisure and rest areas such as catering, leisure bars, coffee bars, and bars. The platform is supported by a connecting rod under the suspended frame, and each platform can carry 30-80 people.

The Adventure Tower project fully considers the participation needs of healthy people and physically disabled people, and adopts a barrier-free continuous protection system design, so that different groups have the opportunity to participate, becoming an ideal place for individuals, groups or families to experience excitement and thrills.



ADVENTURE TOWER

OUTDOOR EXTENSION SERIES **BLEE**



ADVENTURE TOWER

OUTDOOR EXTENSION SERIES **BLEE**

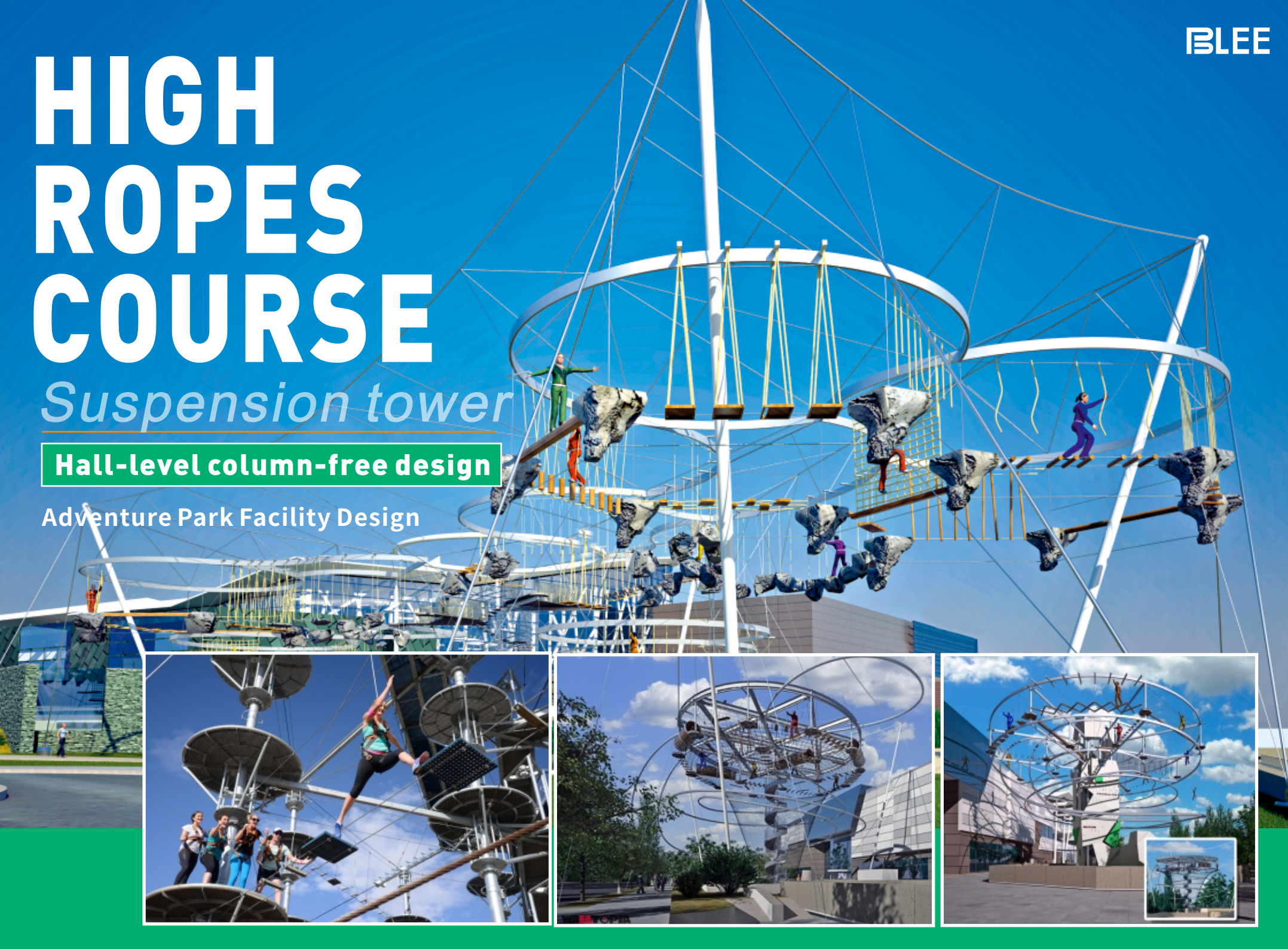


HIGH ROPES COURSE

Suspension tower

Hall-level column-free design

Adventure Park Facility Design



HIGH ROPES COURSE

OUTDOOR EXTENSION SERIES **BLEE**

The design concept of the suspended tower is to create a surreal experience space. The tower body presents a suspended visual effect by using advanced technology and unique structure. Multiple challenge levels are set up inside to inspire the courage and exploration spirit of participants, allowing people to experience a novel and exciting adventure in a suspended situation.



Exclusive customization

OUTDOOR EXTENSION SERIES BLEE

The design concept of the customized series is based on personalized needs. We deeply understand the unique ideas and goals of customers, and integrate innovative elements with practical functions. From design to production, we carefully create exclusive products or experiences to meet the needs of different scenarios and groups, show individual charm and unique value, and realize the ideal customization in the hearts of customers.



Exclusive customization

OUTDOOR EXTENSION SERIES

BLEE



Exclusive customization

OUTDOOR EXTENSION SERIES **BLEE**



Exclusive customization

OUTDOOR EXTENSION SERIES **BLEE**



Exclusive customization

OUTDOOR EXTENSION SERIES **BLEE**



Exclusive customization

OUTDOOR EXTENSION SERIES BLEE



Ropes Course

OUTDOOR EXTENSION SERIES **BLEE**

The design concept of the jungle crossing is to combine returning to nature with challenging oneself. Various obstacle levels are set up in the jungle environment, such as suspension bridges and zip lines. With the help of natural terrain and trees, participants can experience the excitement of crossing the jungle, improve their physical fitness and courage, and feel the charm of nature and the fun of challenges.





广州宝利动漫科技有限公司

Guangzhou Baoli Animation Technology Co., Ltd.

🌐 <https://www.bleegame.com>
<https://www.bleearcade.com>
<https://www.bleeamusement.com>

📍 102, Bldg. A, No. 501, Shixin Road, Dalong Street,
Guangzhou, Guangdong, China

✉ coco@bleearcade.com



Scan to follow websites